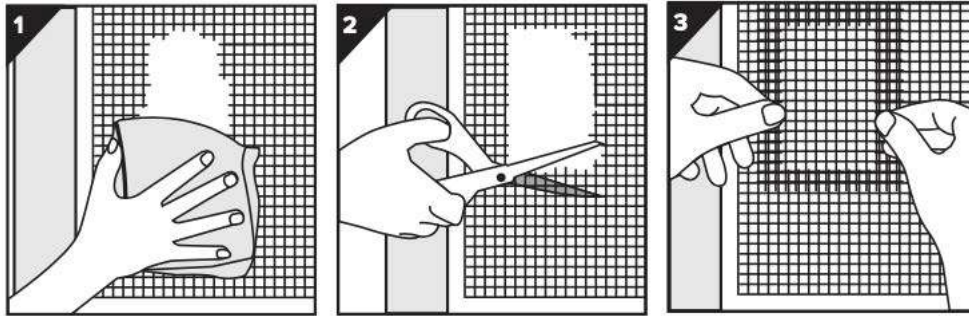


## Screen Repair Patches

### SUPPLIES NEEDED:



### INSTRUCTIONS:

#### FIBERGLASS SELF-ADHESIVE SCREEN REPAIR PATCHES

- Allows hole repairs up to 2-3/4 in x 2-3/4 in (7 cm x 7 cm) • Self-adhesive
- No tools required
- Easy to install

#### INSTRUCTIONS:

1. Clean the repair area
2. Cut the damaged edges
3. Remove the backing paper and apply by pressing firmly



*M-D Canada, a division of M-D Building Products*

#### **Headquarters**

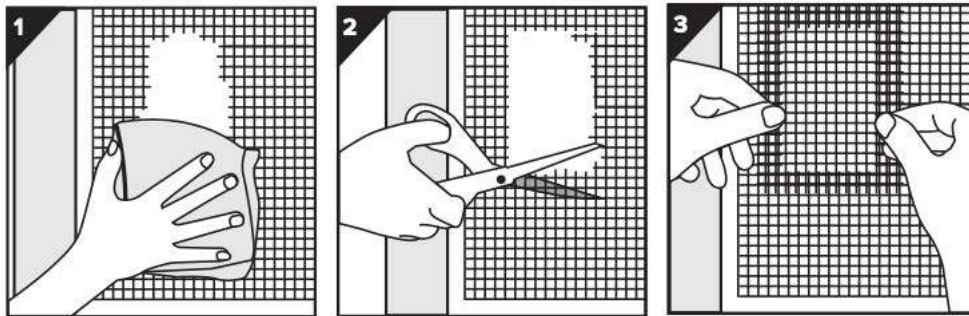
5720 Ambler Drive, Mississauga, ON, L4W 2B1  
1-800-565-6653 | service@mdteam.com

#### **Retail Distribution Center**

2994 Peddie Rd, Unit 2, Milton, ON L9T 6Y9  
1-888-908-1036 | retailorders@mdteam.com

## Pièces de réparation de moustiquaire

### FOURNITURES NÉCESSAIRES :



### INSTRUCTIONS:

#### PIÈCES DE RÉPARATION DE MOUSTIQUAIRE AUTOCOLLANTES EN FIBRE DE VERRE

- Permettent la réparation des trous allant jusqu'à 2-3/4 po x 2-3/4 po (7 cm x 7 cm)
- Autocollantes
- Aucun outil requis
- Faciles à installer

#### INSTRUCTIONS :

1. Nettoyer la surface à réparer
2. Couper les rebords abîmés
3. Retirer l'endos de l'autocollant et appliquer en appuyant fermement



*M-D Canada, une division de M-D Building Products*

*Siège social*

5720 Ambler Drive, Mississauga (Ontario) L4W 2B1  
1 800 565-6653 | service@mdteam.com

*Centre de distribution au détail*

2994 Peddie Road, Unit 2, Milton (Ontario) L9T 6Y9  
1 888 908-1036 | retailorders@mdteam.com